

**RWE Renewables UK Dogger Bank  
South (West) Limited**

**RWE Renewables UK Dogger Bank  
South (East) Limited**

# **Dogger Bank South Offshore Wind Farms**

**Environmental Statement**

**Volume 7**

**Chapter 9 - Benthic and Intertidal Ecology**

**Figure 9-1 to Figure 9-6 (Revision 2)**

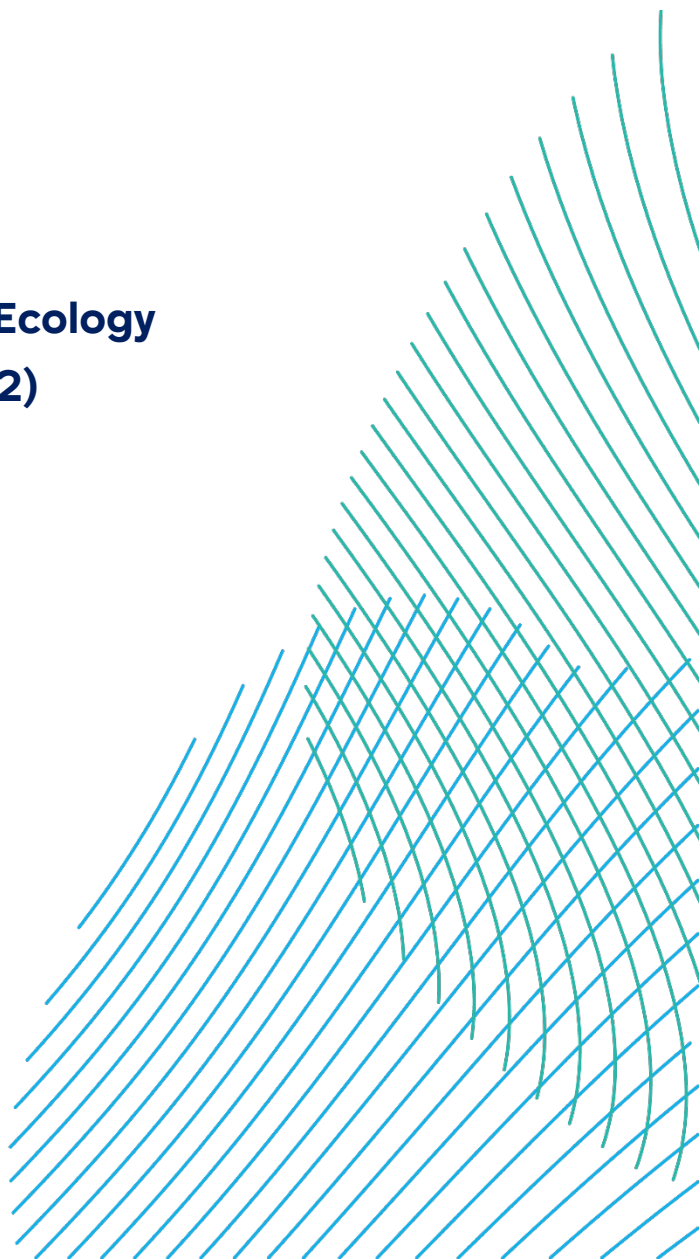
**June 2025**

**Application Reference: 7.9.1**

**APFP Regulation: 5(2)(a)**

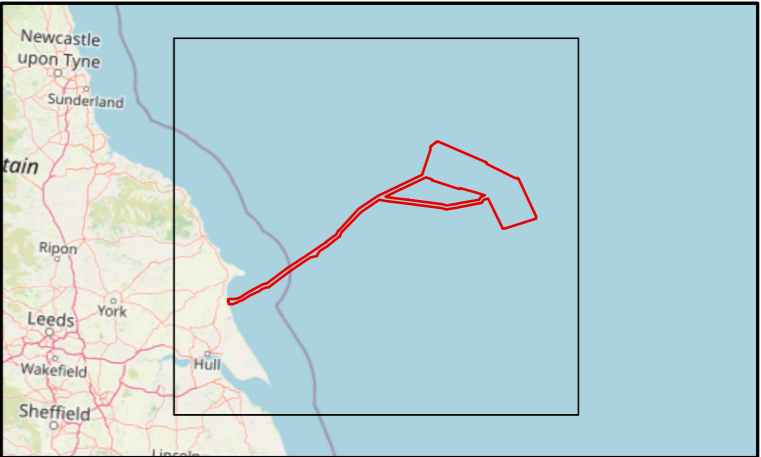
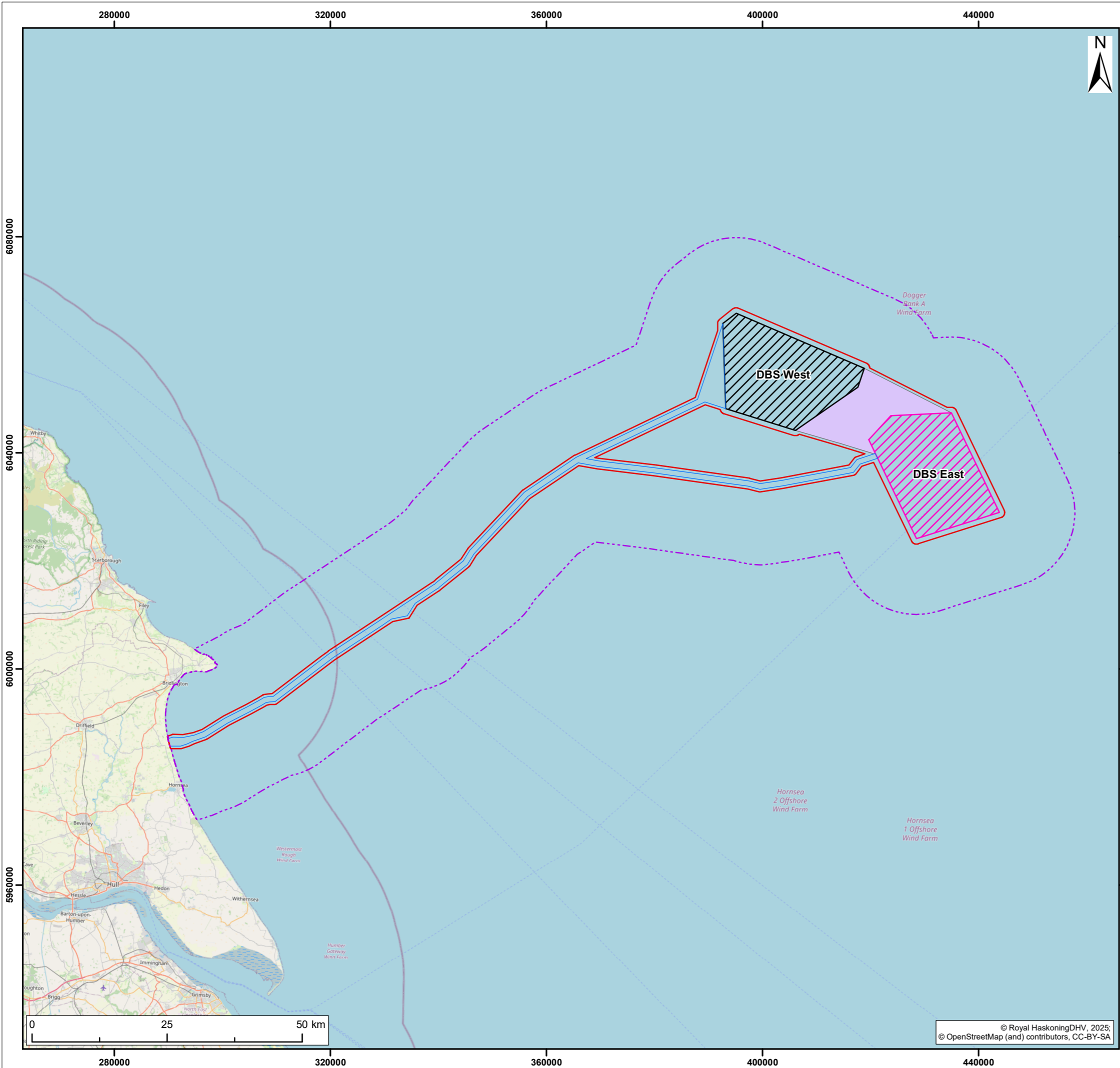
**Revision: 02**

**Unrestricted**



Company:	<b>RWE Renewables UK Dogger Bank South (West) Limited and RWE Renewables UK Dogger Bank South (East) Limited</b>	Asset:	<b>Development</b>		
Project:	<b>Dogger Bank South Offshore Wind Farms</b>	Sub Project/Package:	<b>Consents</b>		
Document Title or Description:	Environmental Statement – Chapter 9 - Figure 9-1 to Figure 9-6 (Revision 2)				
Document Number:	004300152-02	Contractor Reference Number:	PC2340-RHD-OF-ZZ-RP-Z-0092		
<p><i>COPYRIGHT © RWE Renewables UK Dogger Bank South (West) Limited and RWE Renewables UK Dogger Bank South (East) Limited, 2025. All rights reserved.</i></p> <p><i>This document is supplied on and subject to the terms and conditions of the Contractual Agreement relating to this work, under which this document has been supplied, in particular:</i></p> <p><b>LIABILITY</b></p> <p><i>In preparation of this document RWE Renewables UK Dogger Bank South (West) Limited and RWE Renewables UK Dogger Bank South (East) Limited has made reasonable efforts to ensure that the content is accurate, up to date and complete for the purpose for which it was contracted. RWE Renewables UK Dogger Bank South (West) Limited and RWE Renewables UK Dogger Bank South (East) Limited makes no warranty as to the accuracy or completeness of material supplied by the client or their agent.</i></p> <p><i>Other than any liability on RWE Renewables UK Dogger Bank South (West) Limited and RWE Renewables UK Dogger Bank South (East) Limited detailed in the contracts between the parties for this work RWE Renewables UK Dogger Bank South (West) Limited and RWE Renewables UK Dogger Bank South (East) Limited shall have no liability for any loss, damage, injury, claim, expense, cost or other consequence arising as a result of use or reliance upon any information contained in or omitted from this document.</i></p> <p><i>Any persons intending to use this document should satisfy themselves as to its applicability for their intended purpose.</i></p> <p><i>The user of this document has the obligation to employ safe working practices for any activities referred to and to adopt specific practices appropriate to local conditions.</i></p>					
<b>Rev No.</b>	<b>Date</b>	<b>Status/Reason for Issue</b>	<b>Author</b>	<b>Checked by</b>	<b>Approved by</b>
01	June 2024	Final for DCO Application	RHDHV	RWE	RWE
02	June 2025	Submission at Deadline 7	RHDHV	RWE	RWE

Revision Change Log		
Rev No.	Figure	Description
01	N/A	Submitted for DCO Application
02	9-1	Figure 9-1 has been updated at the request of the Examining Authority within the Rule 17 [PD-018] to accurately reflect the proposed development which, as a result of Project Change Request 1 - Offshore & Intertidal Works [AS-141], removed the Electrical Switching Platform from the Offshore Export Cable Corridor.



- Legend:
- Offshore Development Area
  - Offshore Export Cable Corridor
  - DBS East Array Area
  - DBS West Array Area
  - Inter-Platform Cable Corridor
  - Export Cable Corridor and Array Areas 14km Buffer

S4	P03	17/06/2025	Suitable for stage approval	SM	RF	CC
S3	P02	06/02/2024	Suitable for review & comment	JH	SB	RF
S2	P01	10/11/2023	Suitable for information	SB	CC	RF
SUI	REV	DATE	DESCRIPTION	DRW	CHK	APR

Title:

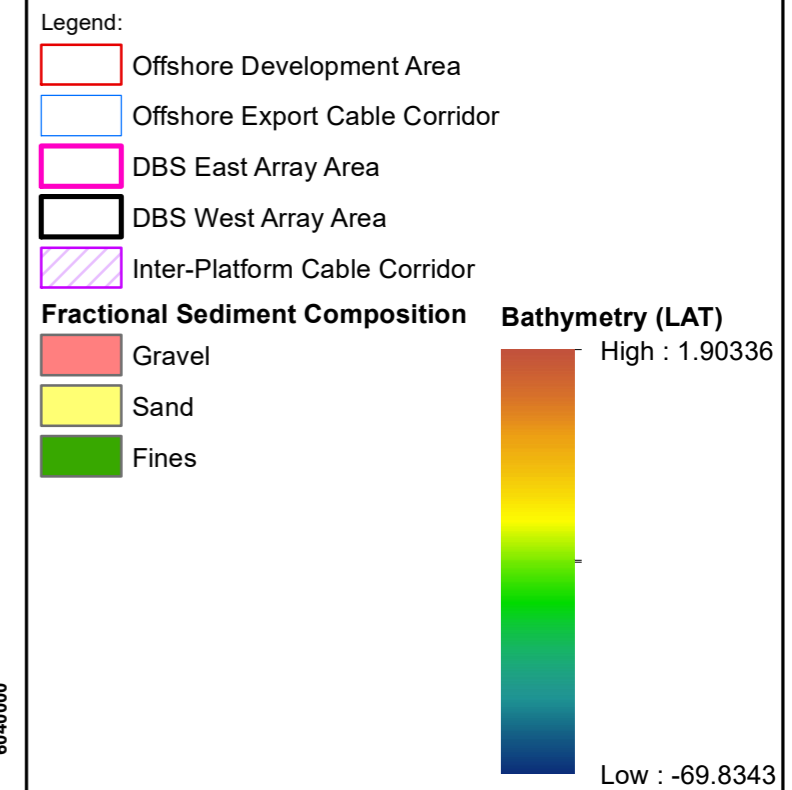
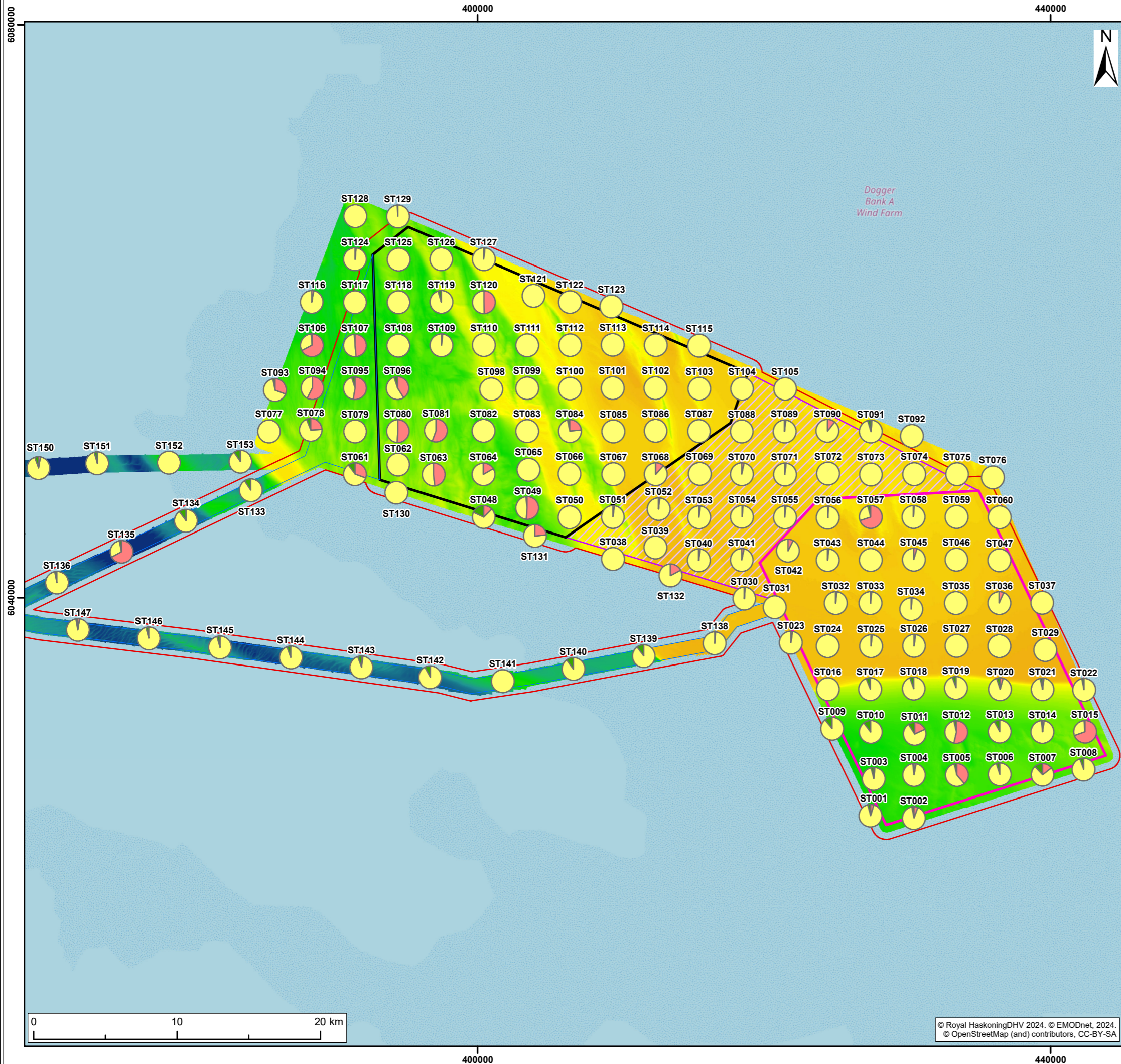
Study Area

Figure: 9-1      Drawing No: PC2340-RHD-OF-ZZ-DR-Z-0613

Co-ordinate system: WGS 1984 UTM Zone 31N	Page Size: A3	Scale: 1:700,000
--	------------------	---------------------

Project:  Dogger Bank South Offshore Wind Farms	Report:  Environmental Statement
--	---



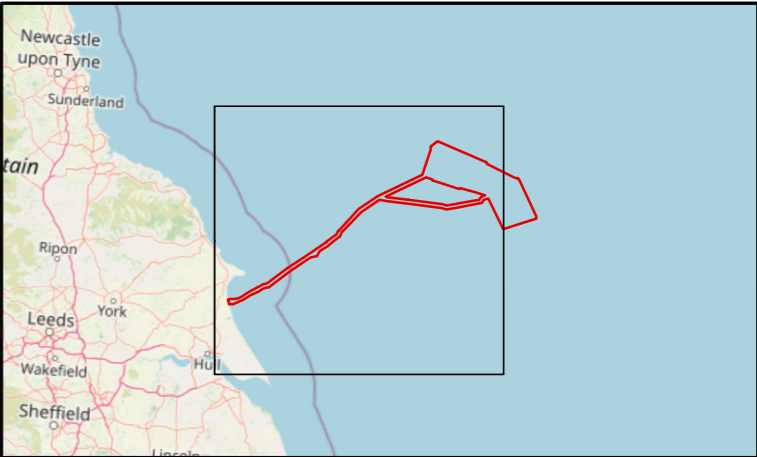
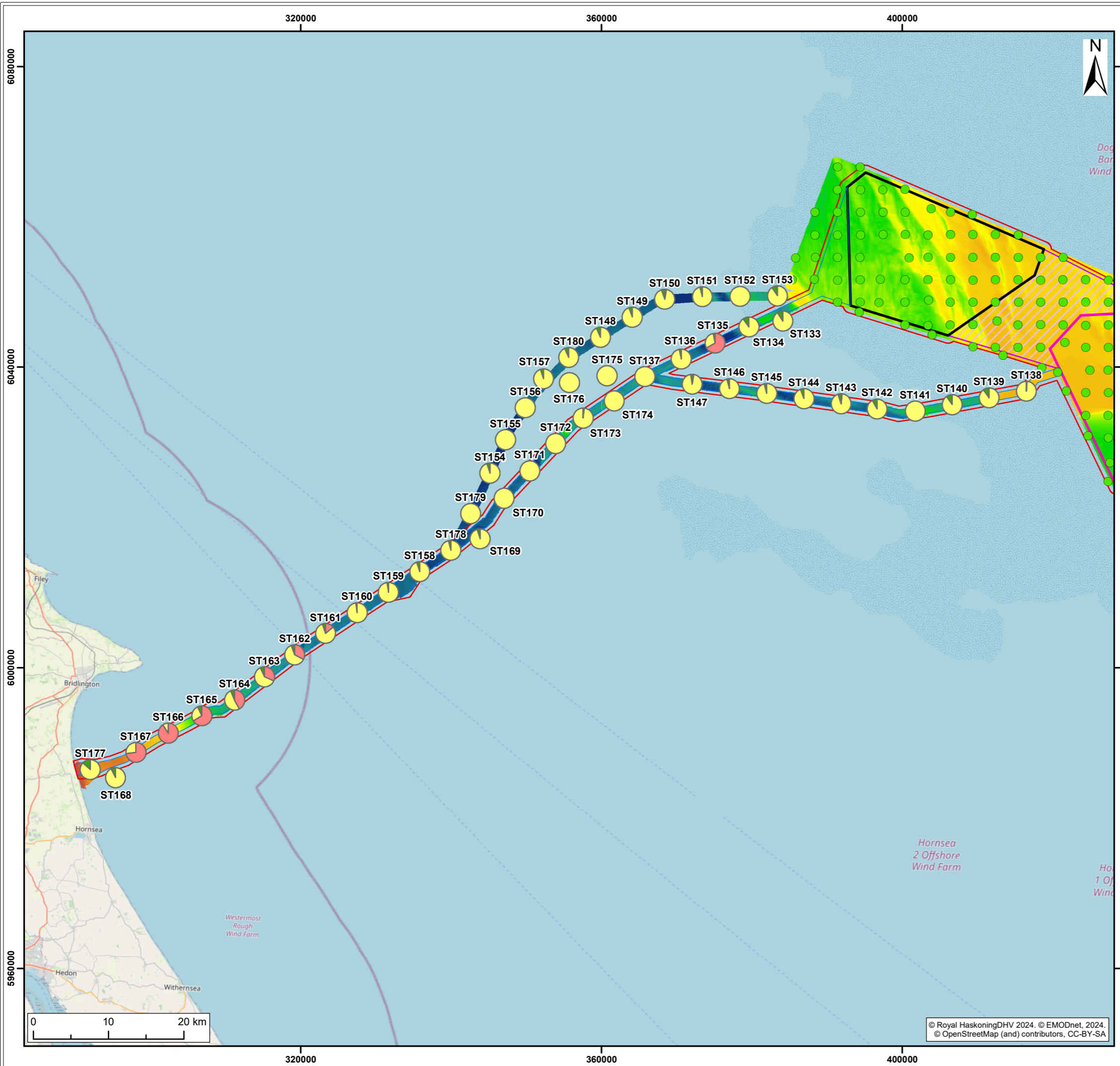


S2	P01	20/02/2024	Suitable for Information	JH	CC	RF
SUI	REV	DATE	DESCRIPTION	DRW	CHK	APR

Title:

Spatial Variations of Percentage of Sand, Gravel and Fines Across the Array Areas of DBS East and DBS West

Figure: 9-2		Drawing No: PC2340-RHD-OF-ZZ-DR-Z-0720	
Co-ordinate system: WGS 1984 UTM Zone 31N		Page Size: A3	Scale: 1:265,000
Project:  Dogger Bank South Offshore Wind Farms		Report:  Environmental Statement	



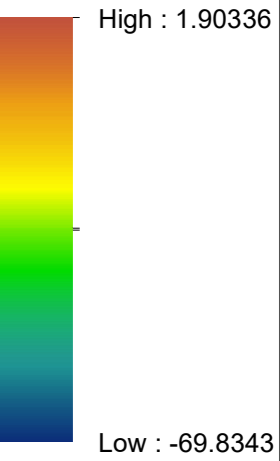
Legend:

- Offshore Development Area
- Offshore Export Cable Corridor
- DBS East Array Area
- DBS West Array Area
- Inter-Platform Cable Corridor

Fractional Sediment Composition

- Gravel
- Sand
- Fines
- Array Station

Bathymetry (LAT)



S2	P01	20/02/2024	Suitable for Information	JH	CC	RF
SUI	REV	DATE	DESCRIPTION	DRW	CHK	APR

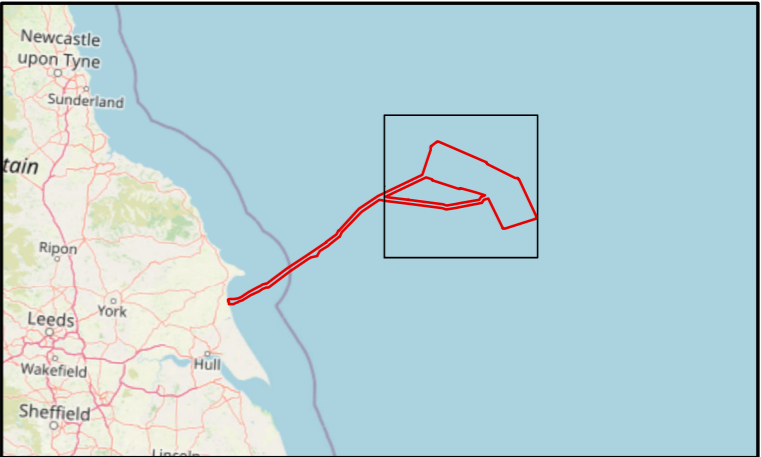
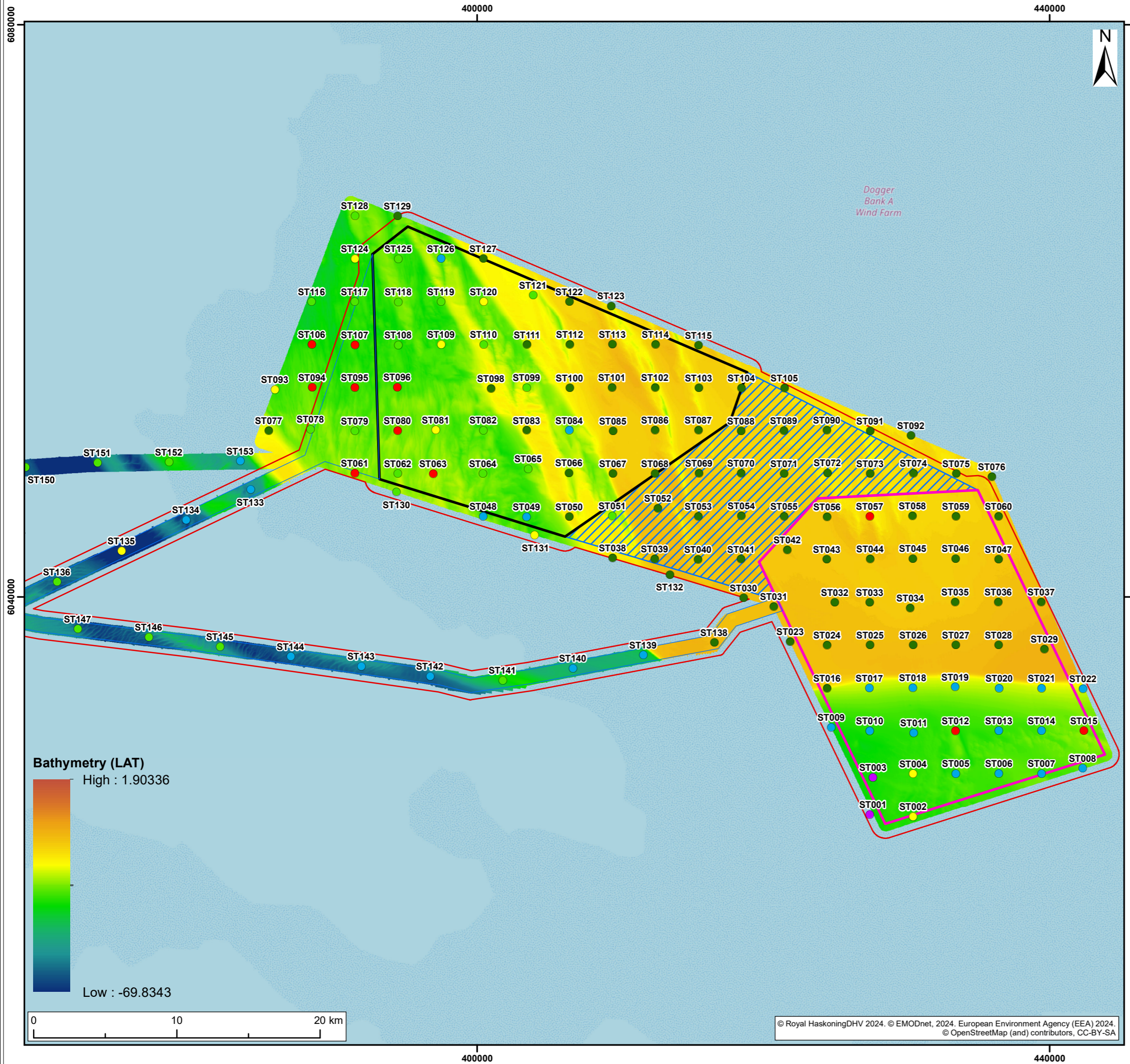
Title:  
Spatial Variations of Percentage of Sand, Gravel and Fines  
Across the Offshore Export Cable Corridor for DBS East and  
DBS West

Figure: 9-3 Drawing No: PC2340-RHD-OF-ZZ-DR-Z-0721

Co-ordinate system: WGS 1984 UTM Zone 31N Page Size: A3 Scale: 1:500,000

Project: Dogger Bank South Offshore Wind Farms Report: Environmental Statement





**Legend:**

- Offshore Development Area
- Offshore Export Cable Corridor
- DBS East Array Area
- DBS West Array Area
- Inter-Platform Cable Corridor

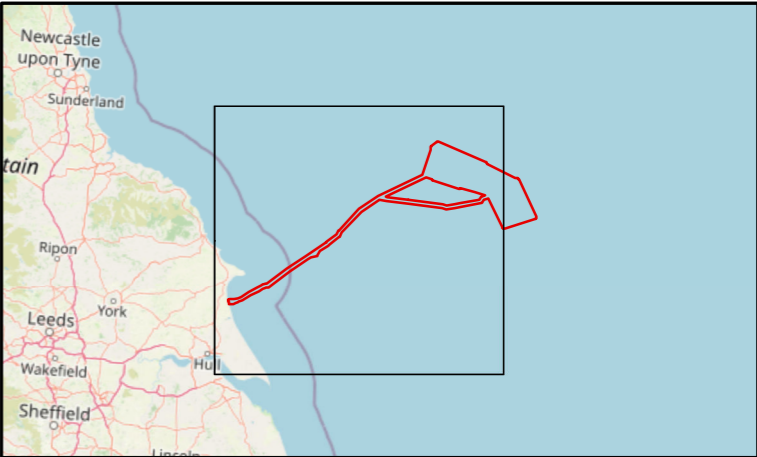
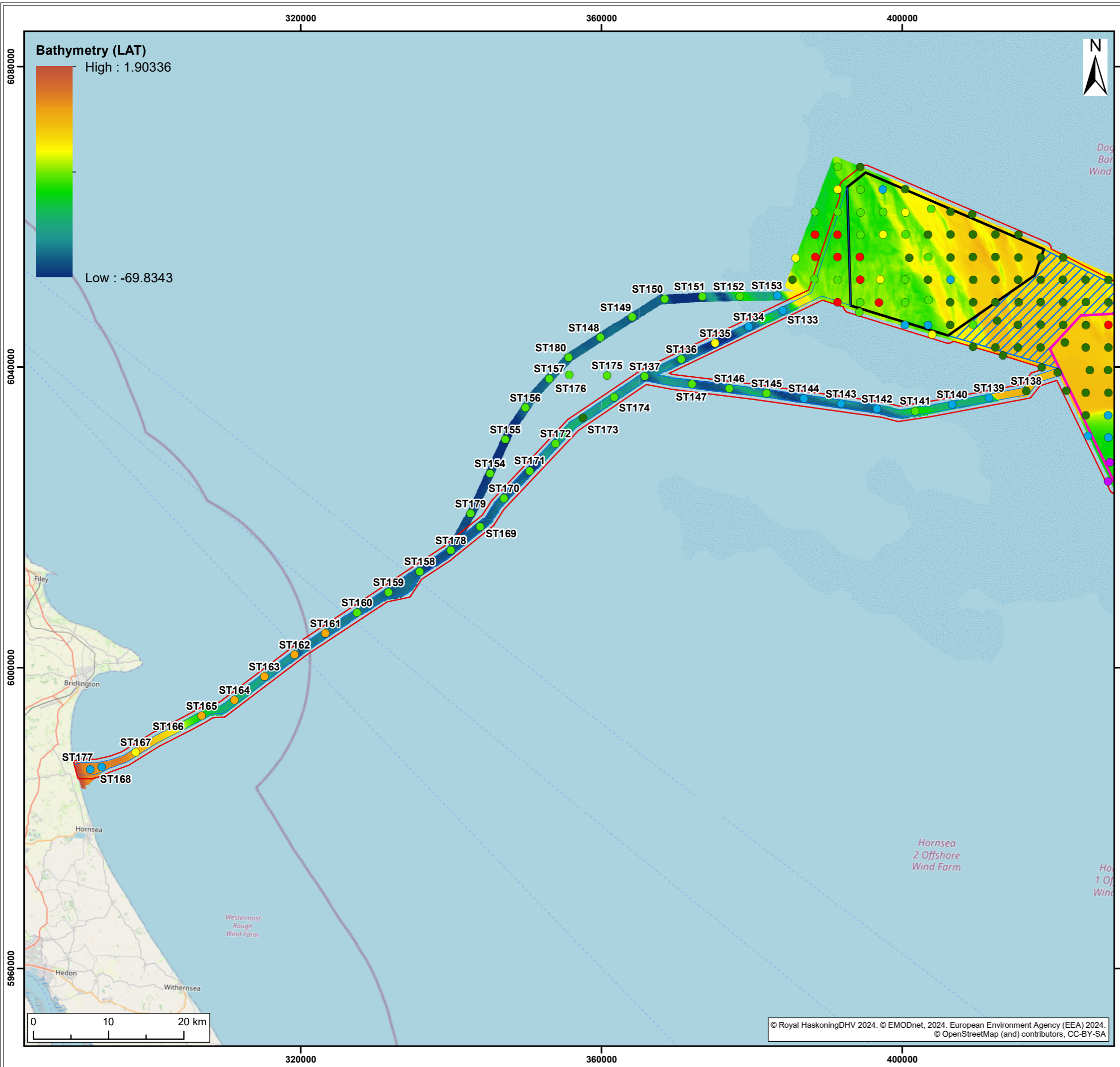
**EUNIS Classification**

- MB5233: *Nephtys cirrosa* and *Bothyporeia* spp. in Atlantic infralittoral sand
- MC3212: *Mediomastus fragilis*, *Lumbrineris* spp. and venerid bilvalves in Atlantic circalittoral coarse sand or gravel
- MC3215: *Branchiostoma lanceolatum* in Atlantic circalittoral coarse sand with shell gravel
- MC3: *Circalittoral coarse sediment*
- MC5212: *Abra prismatica*, *Bathyporeia elegand* and polychaetes in circalittoral fine sand
- MC5214: *Abra alba* and *Nucula nitikdosa* in circalittoral muddy sand or slightly mixed sediment
- MC5214 & MC1251: *Abra alba* and *Nucula nitidosa* in circalittoral muddy sand or slightly mixed sediment and Piddocks with a sparse associated fauna in Atlantic circalittoral very soft chalk or clay

S2	P01	20/02/2024	Suitable for Information	JH	CC	RF
SUI	REV	DATE	DESCRIPTION	DRW	CHK	APR

Title:  
Completed environmental stations and EUNIS (EEA, 2022) habitat classifications within the proposed Array Areas

Figure: 9-4	Drawing No: PC2340-RHD-OF-ZZ-DR-Z-0722		
Co-ordinate system: WGS 1984 UTM Zone 31N		Page Size: A3	Scale: 1:265,000
Project:  Dogger Bank South Offshore Wind Farms		Report:  Environmental Statement	



Legend:

- Offshore Development Area
- Offshore Export Cable Corridor
- DBS East Array Area
- DBS West Array Area
- Inter-Platform Cable Corridor

EUNIS Classification

- MB5233: *Nephtys cirrosa* and *Bothyporeia* spp. in Atlantic infralittoral sand
- MC3212: *Mediomastus fragilis*, *Lumbrineris* spp. and venerid bilvalves in Atlantic circalittoral coarse sand or gravel
- MC3215: *Branchiostoma lanceolatum* in Atlantic circalittoral coarse sand with shell gravel
- MC3: *Circalittoral coarse sediment*
- MC5212: *Abra prismatica*, *Bathyporeia elegand* and polychaetes in circalittoral fine sand
- MC5214: *Abra alba* and *Nucula nitikdosa* in ciraclittoral muddy sand or slightly mixed sediment
- MC5214 & MC1251: *Abra alba* and *Nucula nitidosa* in circalittoral muddy sand or slightly mixed sediment and Piddocks with a sparse associated fauna in Atlantic circalittoral very soft chalk or clay

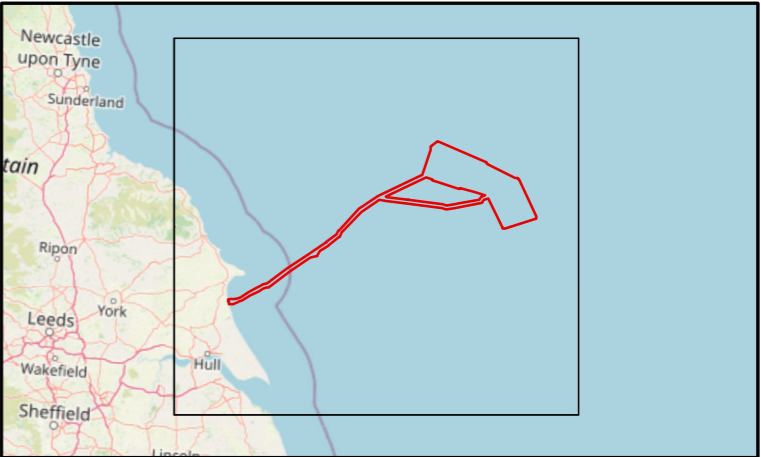
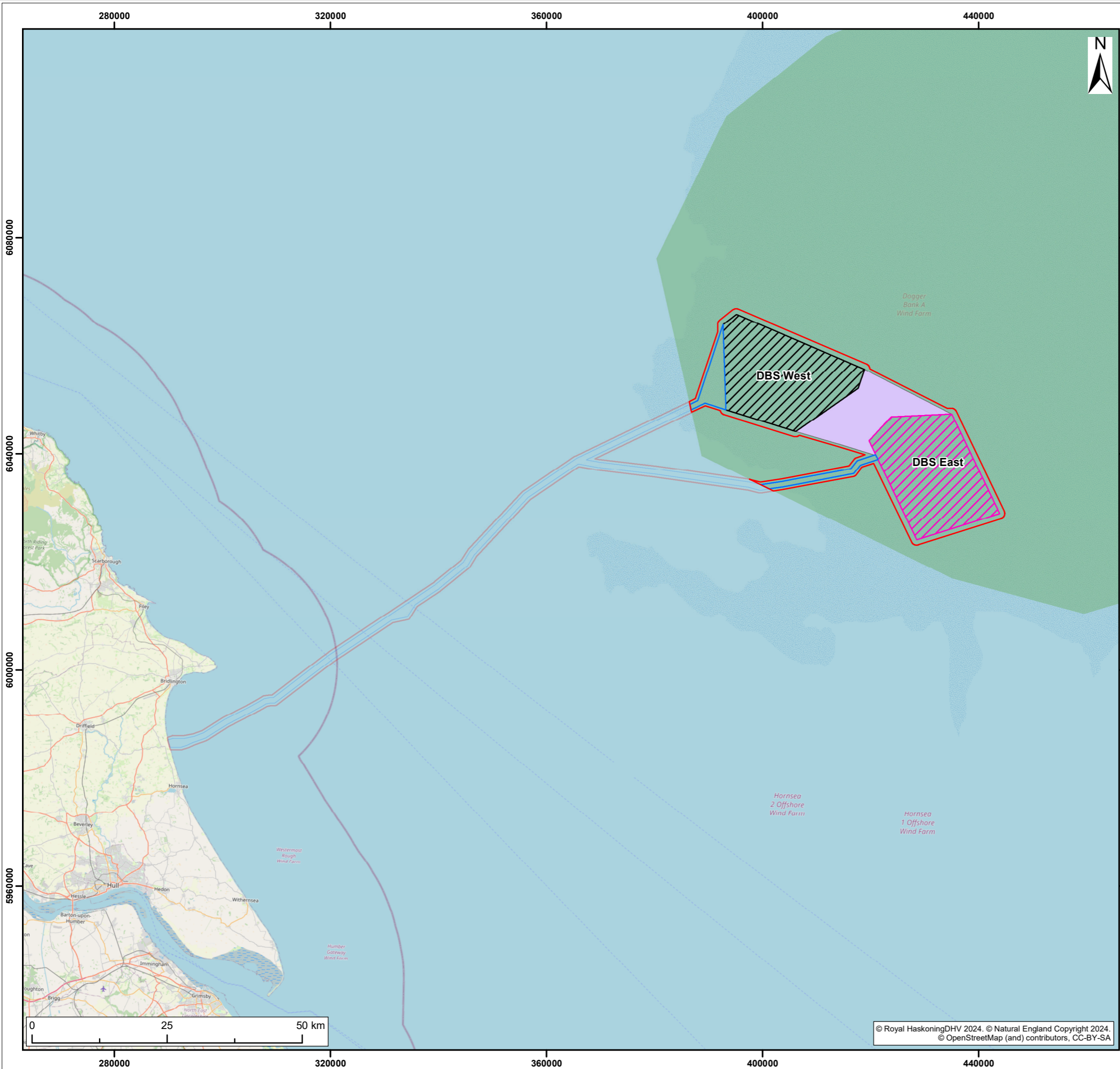
S2	P01	20/02/2024	Suitable for Information	JH	CC	RF
SUI	REV	DATE	DESCRIPTION	DRW	CHK	APR

Title:  
Completed environmental stations and EUNIS (EEA, 2022) habitat classifications along the Offshore Export Cable Corridor

Figure: 9-5 Drawing No: PC2340-RHD-OF-ZZ-DR-Z-0723

Co-ordinate system: WGS 1984 UTM Zone 31N Page Size: A3 Scale: 1:500,000

Project: Dogger Bank South Offshore Wind Farms Report: Environmental Statement



- Legend:
- Offshore Development Area
  - Offshore Export Cable Corridor
  - DBS East Array Area
  - DBS West Array Area
  - Inter-Platform Cable Corridor
  - Dogger Bank SAC

S2	P01	20/02/2024	Suitable for Information	JH	CC	RF
SUI	REV	DATE	DESCRIPTION	DRW	CHK	APR

Title:  
The extent of the Projects' Offshore Development Area which falls within the Dogger Bank SAC

Figure: 9-6      Drawing No: PC2340-RHD-OF-ZZ-DR-Z-0724

Co-ordinate system: WGS 1984 UTM Zone 31N	Page Size: A3	Scale: 1:700,000
Project: Dogger Bank South Offshore Wind Farms	Report: Environmental Statement	

